

RESIDENTIAL FALL PROTECTION

Virginia Department of Labor and Industry



Hazard Recognition

Most of us recognize fall hazards

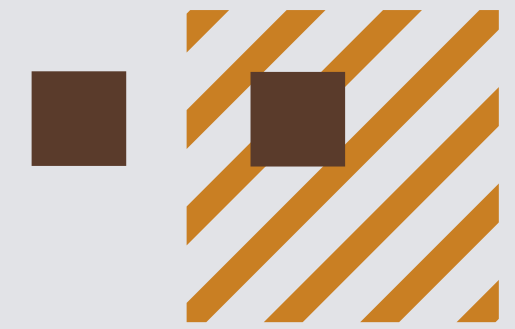
It is how to correct those hazards that's difficult

Using the following series of photographs
we will attempt to recognize hazards
And develop corrections to the hazards

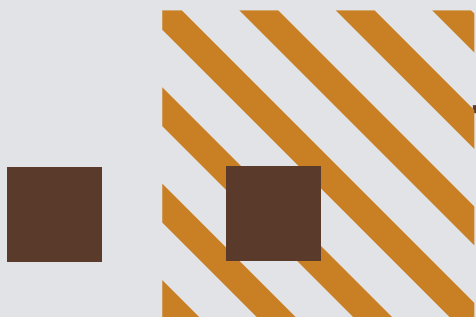


01.

Guardrails



- Required where exposed to a 6 foot fall or more
- Must be 39 to 45 inches tall
- Must have a mid-rail
- Must support a 200 pound load
- Not strong enough to sit or lean on
- Must be taller where employees use stilts or ladders

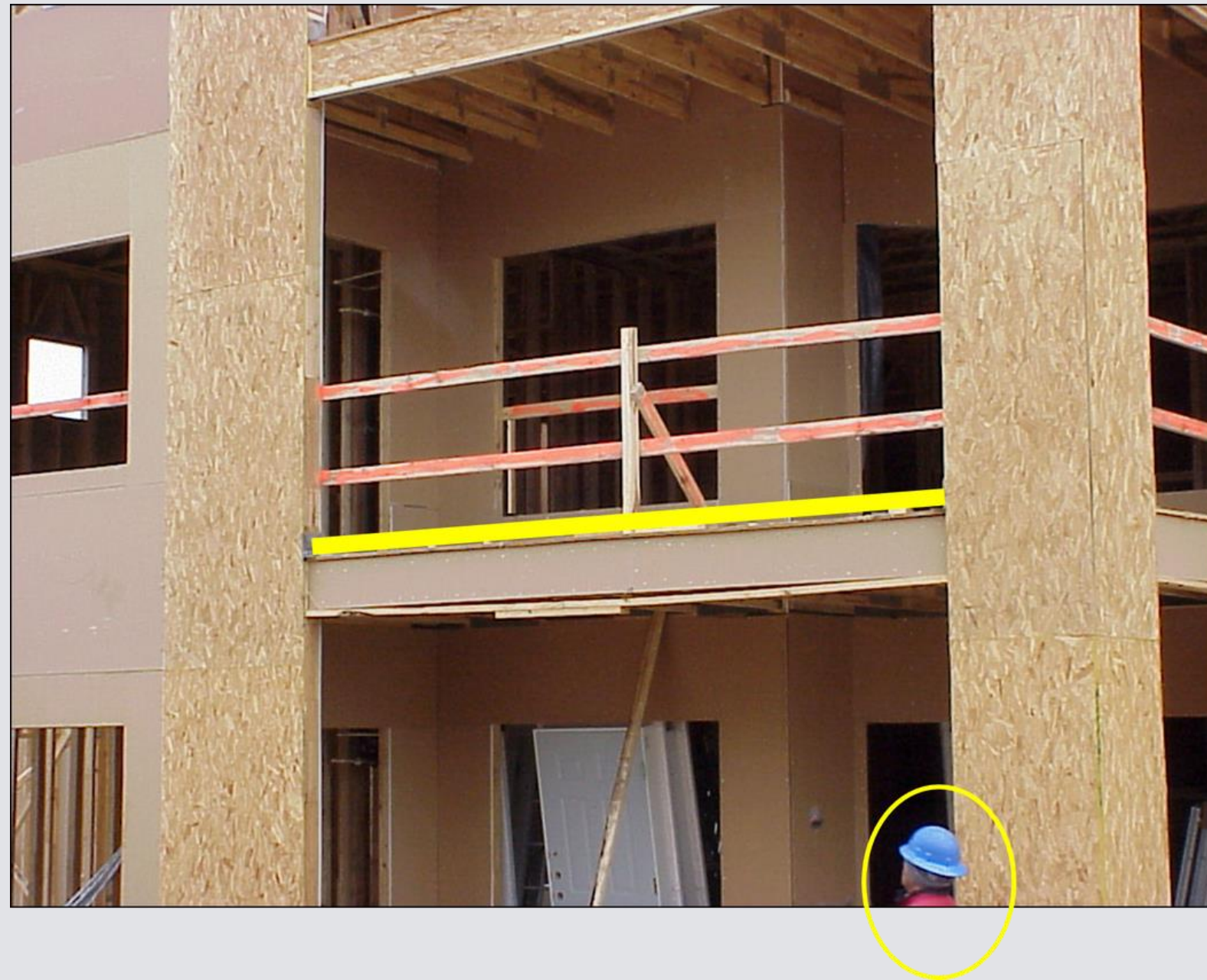




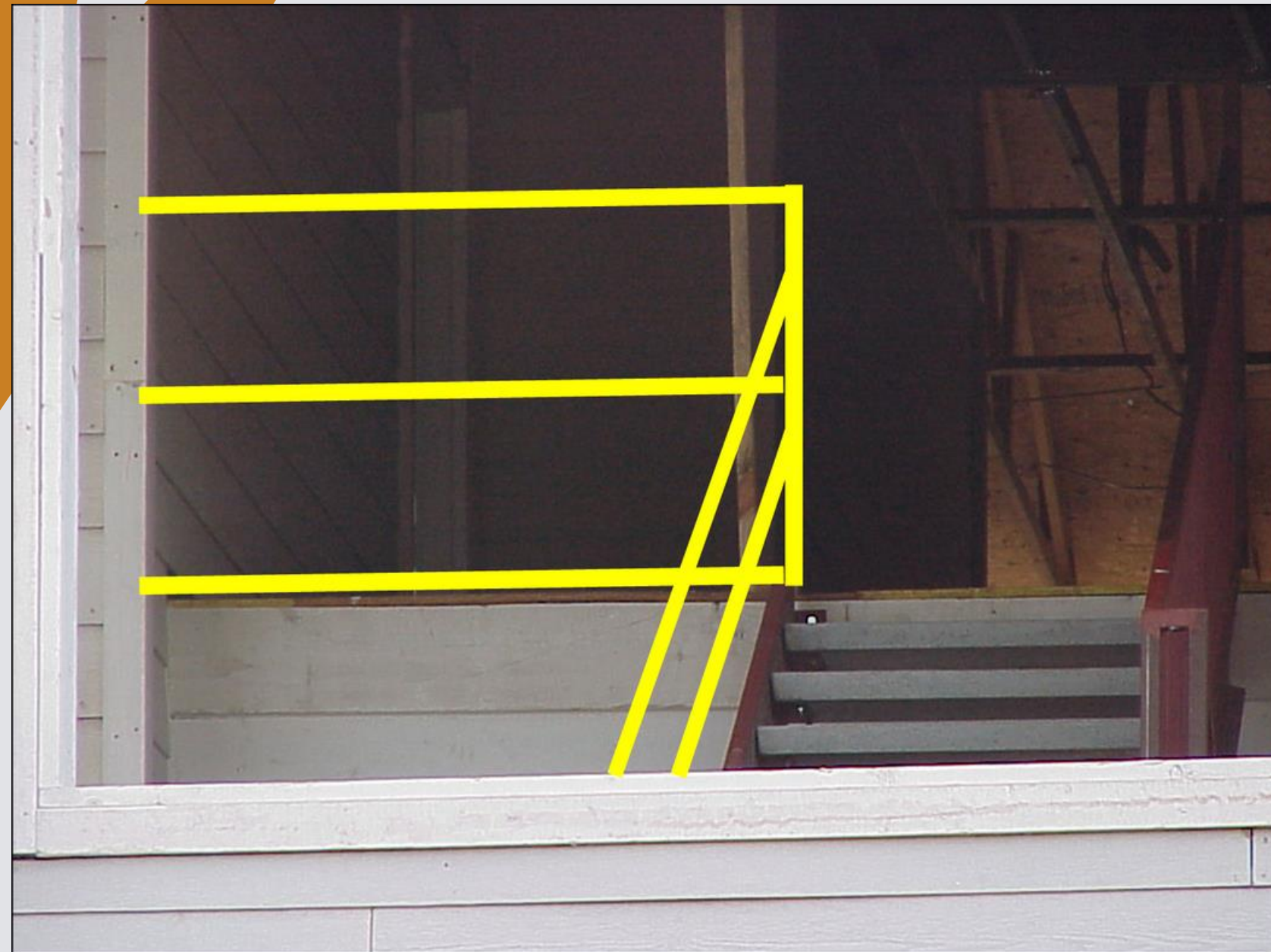
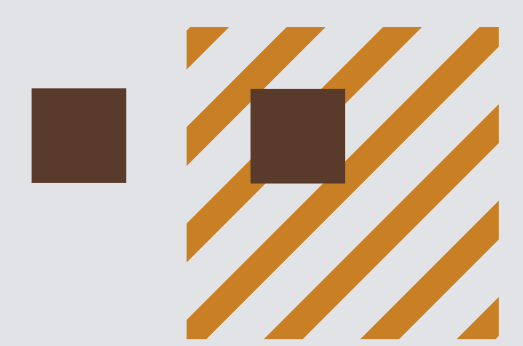




Toeboards



Must be provided when employees are in the area below



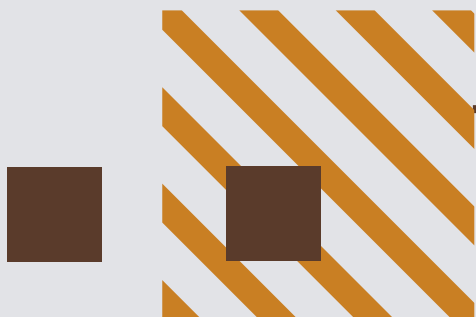
Stair Rails and Hand Rails

Must be provided before stairs are used

Must be at 36 to 37 inches tall

Guardrail will be higher

Must include mid-rail or balusters





Working Outside of Walls

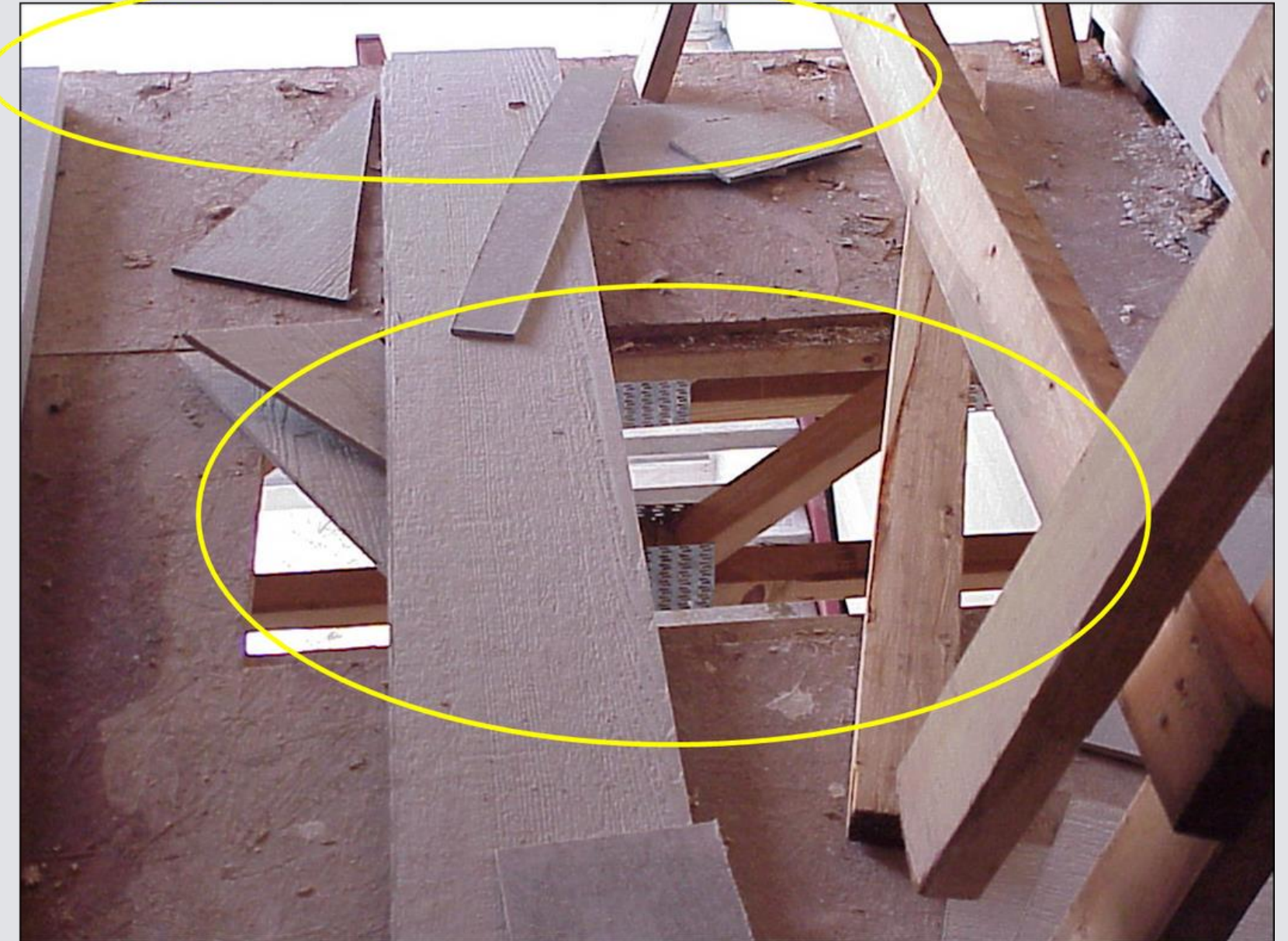
- **Employees leaning over walls must be protected**
- **Employees working outside of walls must be protected also**
- **Studs do not provide proper anchorage**





Holes

- Floor and deck holes must be protected
 - Hole covers
 - Guardrails
 - Put employees in Fall Protection
- Hole covers must be labeled
 - “HOLE” or “COVER”
 - Distinctively painted or color coded





Material Deliveries

- **Employees receiving material must be protected**
 - **Guardrails**
 - **Fall Restraint**
 - **Fall Prevention**







Roofers

- Roofers must be protected if over 6 feet
- Roof pitch determines protection needed
- Minimum protection could include
 - Guardrails
 - Slideguards
 - Lifeline Systems



Layout and Trusses

- **Walking the top plate is not acceptable**
- **Work off of scaffolds or ladders**
- **Provide Fall Protection for employees**
- **Set first truss from scaffold/ladder**
- **Set other trusses from area between erected trusses**





Cornice

- Employees installing cornice must be protected
 - Work from ladders, scaffolds or boom lifts
 - Wear fall protection or fall restraint



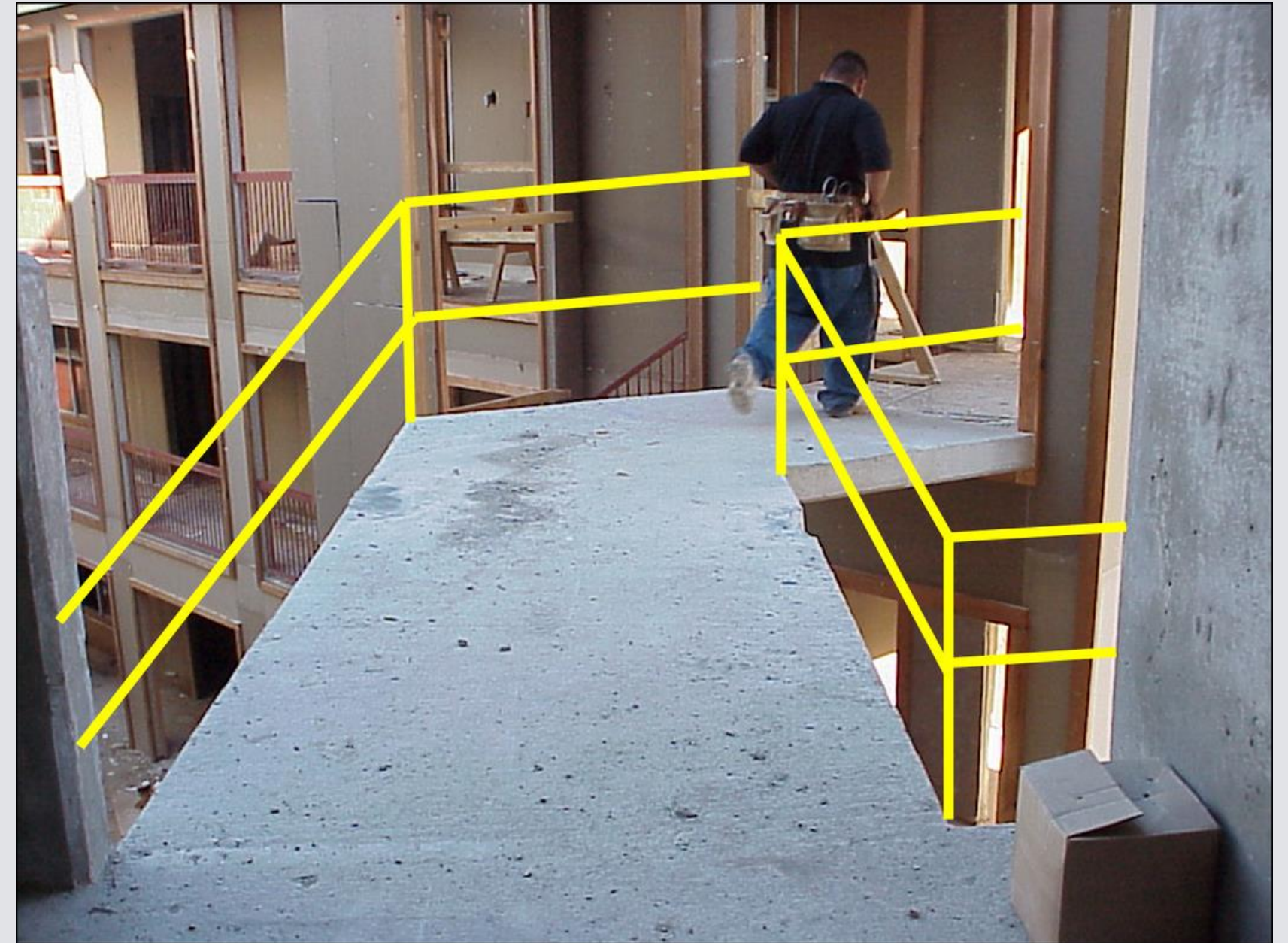
Ladders

- **Job built ladders must meet the ANSI A10.14 standard**
 - **Strength of materials, including no gun nails**
 - **Total length of ladder less than 20 feet**
 - **Top rungs left out to allow access to floor above**



Walkways

- Walkways must have guardrails before being used
- If employees will be below, toeboards must be used



QUESTIONS?

Answers to additional questions can be found in the following source materials

- 29 CFR 1926 Construction Regulations
- STD 3-0.1A Fall Protection for Residential Construction
 - ANSI A10.14 Job Built Ladders for Construction

Contact VOSH Consultation Services for Assistance

https://doli.virginia.gov/consultation_services/

consultation@doli.virginia.gov